

# Hameln International Senior Open 2024



<b>Oil Pattern Distance:</b>	<b>42 Feet</b>	<b>Reverse Brush Drop:</b>	<b>40 Feet</b>	<b>Oil Per Board:</b>	<b>50 uL</b>
<b>Forward Oil Total:</b>	<b>15.4 mL</b>	<b>Reverse Oil Total:</b>	<b>10.1 mL</b>	<b>Volume Oil Total:</b>	<b>25.5 mL</b>
<b>Forward Boards Crossed:</b>	<b>308 Boards</b>	<b>Reverse Boards Crossed:</b>	<b>202 Boards</b>	<b>Total Boards Crossed:</b>	<b>510 Boards</b>

	Start	Stop	Loads	Speed	Crossed	Start	End	Feet	T.Oil
1	3L	3R	2	14	70	0.0	1.9	1.9	3500
2	6L	6R	2	14	58	1.9	5.8	3.9	2900
3	8L	8R	2	18	50	5.8	10.9	5.1	2500
4	10L	10R	2	18	42	10.9	16.0	5.1	2100
5	12L	12R	2	18	34	16.0	21.1	5.1	1700
6	13L	13R	1	18	15	21.1	23.6	2.5	750
7	14L	14R	1	18	13	23.6	26.1	2.5	650
8	14L	14R	1	22	13	26.1	29.2	3.1	650
9	14L	14R	1	26	13	29.2	32.8	3.6	650
10	2L	2R	0	26	0	32.8	42.0	9.2	0

Navigation: Forward Reverse More

	Start	Stop	Loads	Speed	Crossed	Start	End	Feet	T.Oil
1	2L	2R	0	26	0	42.0	35.0	-7.0	0
2	14L	14R	1	26	13	35.0	31.4	-3.6	650
3	13L	13R	1	26	15	31.4	27.8	-3.6	750
4	12L	12R	1	22	17	27.8	24.7	-3.1	850
5	11L	11R	1	22	19	24.7	21.6	-3.1	950
6	10L	10R	2	18	42	21.6	16.5	-5.1	2100
7	9L	9R	2	18	46	16.5	11.4	-5.1	2300
8	8L	8R	2	14	50	11.4	7.5	-3.9	2500
9	2L	2R	0	14	0	7.5	0.0	-7.5	0

Navigation: Forward Reverse More

Conditioner:  
Type In or Select One

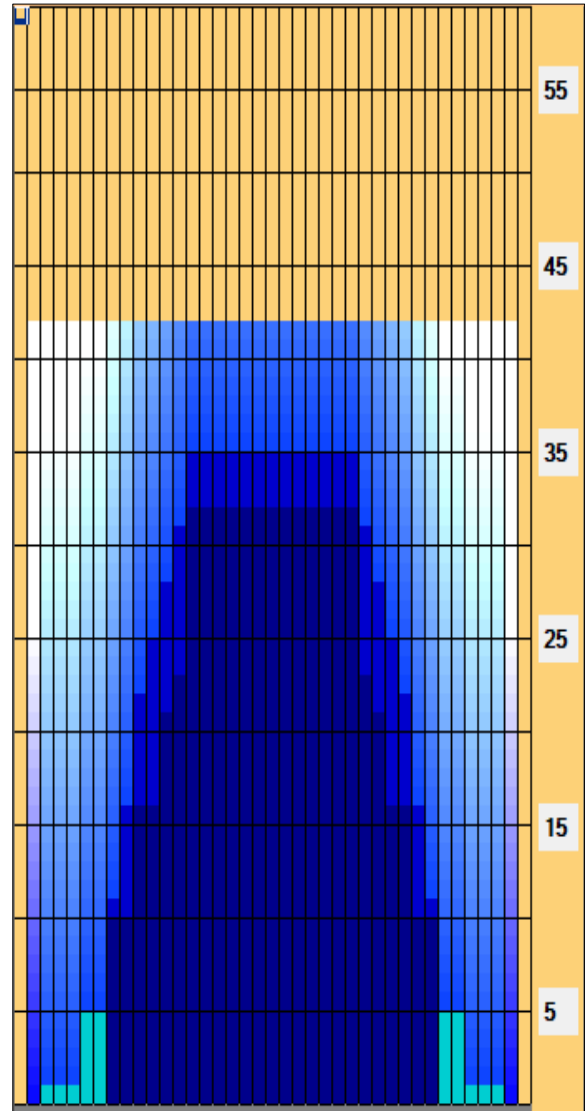
TransferType:  
Type In or Select One

Forward

Reverse

Combined

Buff



Item Description	3L-7L:18L-18R Outside Track:Middle	8L-12L:18L-18R Middle Track:Middle	13L-17L:18L-18R Inside Track:Middle	18L-18R:17R-13R Middle: Inside Track	18L-18R:12R-8R Middle:Middle Track	18L-18R:7R-3R Middle:Outside Track
Track Zone Ratio	8.57	1.85	1.03	1.03	1.85	8.57

